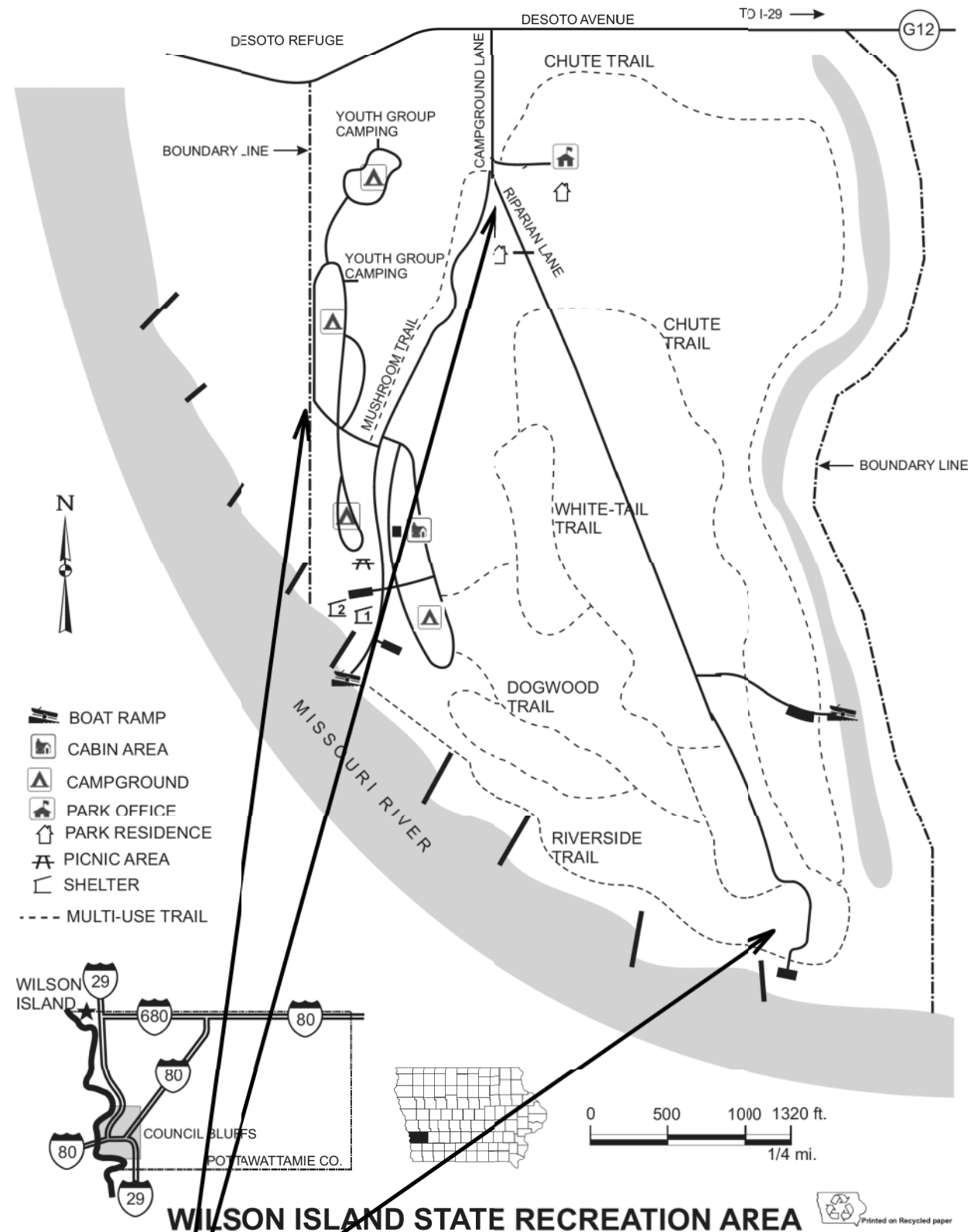






PROJECT LOCATION



WILSON ISLAND STATE RECREATION AREA

CONSULTANT:

IOWA DEPARTMENT OF  
NATURAL RESOURCES

ENGINEERING SERVICES - WALLACE BUILDING  
502 E. 9TH ST., DES MOINES, IA 50319-0034



PROJECT LOCATION MAP

PAVEMENT REPAIR FOR:  
WILSON ISLAND SRA

POTTAWATTAMIE COUNTY

NO. BY REVISION

DRAWN BY: PROJECT NUMBER:

17-04-78-06

CHKD BY: DATE:

APRIL 2010

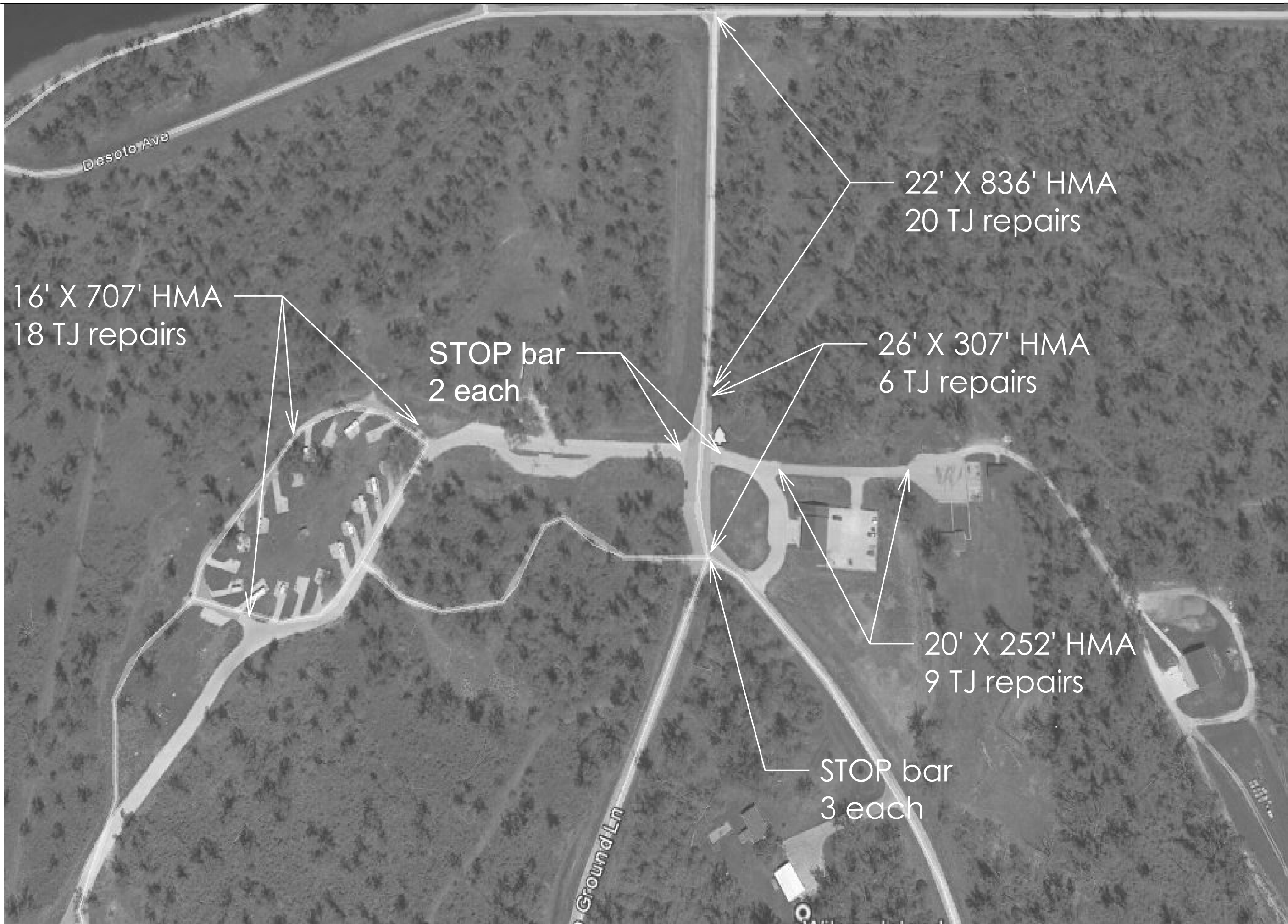
SHEET No.:

A.02

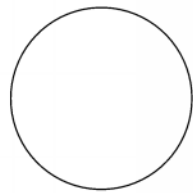








CONSULTANT:



**IOWA DEPARTMENT OF  
NATURAL RESOURCES**

ENGINEERING SERVICES - WALLACE BUILDING  
502 E. 9TH ST., DES MOINES, IA 50319-0034



**SITE PLAN**

PAVEMENT REPAIR FOR:

WILSON ISLAND SRA

POITAWATOMIE COUNTY

NO.	BY	REVISION

DRAWN BY: PROJECT NUMBER:

17-04-78-06

CHKD BY: DATE:

APRIL 2010

SHEET No:

**D.02**



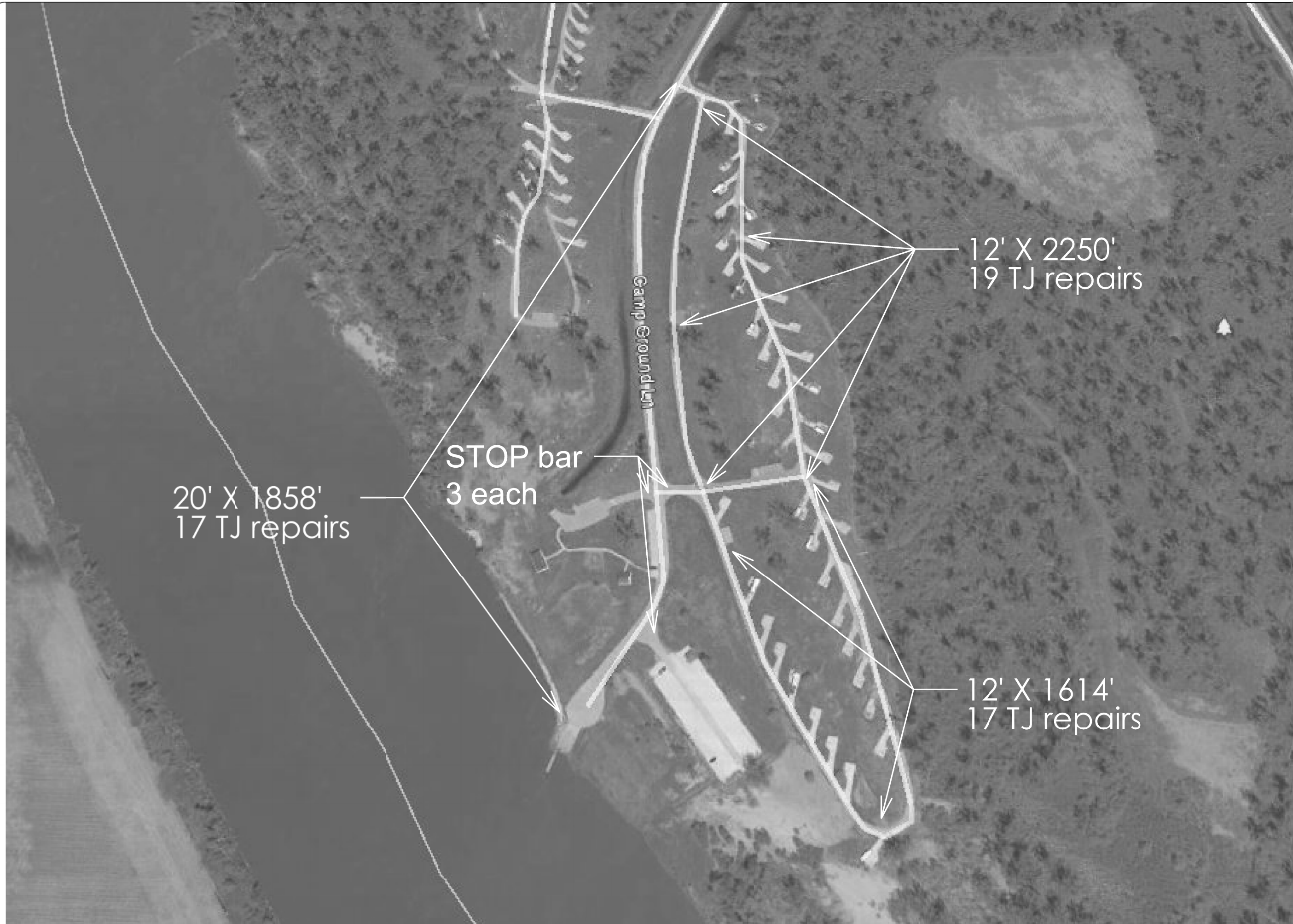












20' X 1858'  
17 TJ repairs

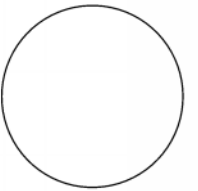
STOP bar  
3 each

12' X 2250'  
19 TJ repairs

12' X 1614'  
17 TJ repairs

Camp Ground Ln

CONSULTANT:



**IOWA DEPARTMENT OF  
NATURAL RESOURCES**  
ENGINEERING SERVICES - WALLACE BUILDING  
502 E. 9TH ST., DES MOINES, IA 50319-0034



**SITE PLAN**

PAVEMENT REPAIR FOR:  
**WILSON ISLAND SRA**  
POITAWATAMIE COUNTY

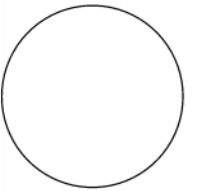
NO.	BY	REVISION

DRAWN BY: PROJECT NUMBER:  
17-04-78-06  
CHKD BY: DATE:  
APRIL 2016

SHEET No: **D.07**



CONSULTANT:



**IOWA DEPARTMENT OF  
NATURAL RESOURCES**

ENGINEERING SERVICES - WALLACE BUILDING  
502 E. 9TH ST., DES MOINES, IA 50319-0034



**SITE PLAN**

PAVEMENT REPAIR FOR:  
**WILSON ISLAND SRA**

POITAWATAMIE COUNTY

NO.	BY	REVISION

DRAWN BY: PROJECT NUMBER:  
17-04-78-06

CHKD BY: DATE:  
APRIL 2016

SHEET No:

**D.08**

